

# AQUABROADCAST

## COBALT FM TRANSMITTER QUICKSTART GUIDE

Creating the Most Exciting and Engaging FM Broadcast experience possible...

Thanks for choosing an Aqua Broadcast COBALT Fully-featured FM Transmitter. We hope that you enjoy your Aqua Broadcast product for many years to come. This quickstart guide is relevant to all COBALT models.

**NOTE - Most advanced features can only be set using the web remote facility. Where possible, please connect your COBALT to a network to enjoy the full user experience.**

This QuickStart Guide assumes a few things:

You have basic networking skills and a familiarity with networking terminology  
You have familiarity with RF Transmission and Audio products

We dont ship products with User manuals

Please download the complete user manual at <https://www.aquabroadcast.co.uk/support>  
Or scan the QR code.



## CONNECTIONS

Before turning on the Transmitter, be sure to connect the following at a minimum.

- ~ RF Cable to Antenna or suitable Dummy-load
- ~ Connect inputs and outputs as required for your particular installation (Analog Left/Right, AES/EBU, MPX)
- ~ Ethernet Cable to Router
- ~ Power Cable

## POWER

There is an on/off switch right next to the Power cable input of the COBALT. We urge you to test and ensure your electrical power and confirm the Voltage is within nominal ranges before powering the unit on. It is also advised that the circuit is equipped with adequate surge protection and fitted with an uninterruptable power supply (UPS).

## INITIAL NETWORK SETUP

**IMPORTANT - Connect your COBALT to a Router. Please do not attempt to connect the COBALT directly to a PC unless you have a crossover cable and additional networking knowledge**

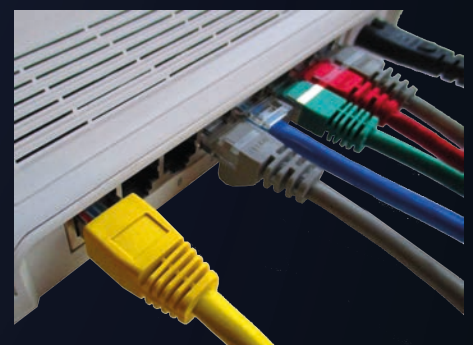
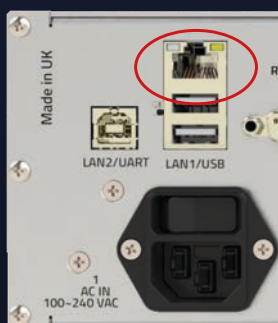
COBALT ships with DHCP set to NO (OFF) and the default IP address is 192.168.1.100  
Please check the settings on the front panel.

You can easily define your own IP address of the COBALT from the front panel controls.

Setting DHCP to YES will automatically retrieve an IP address when connected to a network with a DHCP server.  
The Windows PC on which the COBALT will be installed should be connected to the same network and subnet as the COBALT.

NETWORK	SYSTEM	11:30:27
DHCP: YES		
IP:	192 . 168 .	1 . 100
MASK: 24		
GATE:	192 . 168 .	1 . 254
DNS 1:	192 . 168 .	1 . 254
MAC:	8c:1f:64:eb:20:01	

- 1 Connect an RJ45 cable to the LAN1 port on the rear of the COBALT to your router.



2

On your web browser, enter the IP address and click enter.



When you see the following screen, please enter the default username and password

 A screenshot of the 'AQUABROADCAST' login interface. It includes a title 'AQUABROADCAST', a 'Username' field, a 'Password' field, a 'Remember me' checkbox, and a 'Sign in' button.

## LOGIN DETAILS

The default user login credentials for all COBALT FM Transmitter products is

Username - admin  
Password - pass

## ADJUSTMENTS USING THE WEB REMOTE INTERFACE

To adjust certain critical parameters, you need to click the RED padlock icon to unlock the editing mode, and then enter your desired value. The lock stops you inadvertently making a change. All other parameter values are easily changed by entering the value.

## USING THE FRONT PANEL CONTROLS

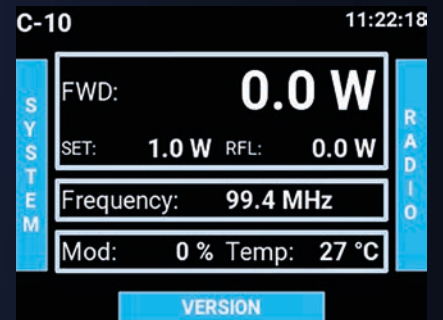
The Cobalt has a clickable joystick as the main input interface. The navigation through the menus occurs at two levels.

- On the first level you can quickly browse through the different screens

The main menu categories are connected as a ring, on the left/right direction, but there might be related screens hanging up or down. On each screen, BLUE labels on its sides show the available navigation directions.

- On the second level you can navigate inside a particular screen:

Once you have reached the screen where the parameter you want to change is, hit the button once to enter that screen. You can now move through the parameters in that page. Move to that parameter and click to start editing that parameter. Use the joystick to change the value and then click to accept or double click to cancel (revert to the previous value). Double click again to go back to screen navigation.



## CONTACTS AND USEFUL INFORMATION



Reference for letter size



Tech Support: +44 203 411 0387  
Support email - support@aquabroadcast.co.uk

Call us: +44 203 411 0387  
email us - info@aquabroadcast.co.uk  
Subscribe to our Newsletter <https://www.aquabroadcast.co.uk/contact>



Visit our Youtube channel, search for Aqua Broadcast

Aqua Broadcast Ltd  
Unit 7, First Quarter  
Blenheim Road  
Epsom  
KT19 9QN  
United Kingdom